
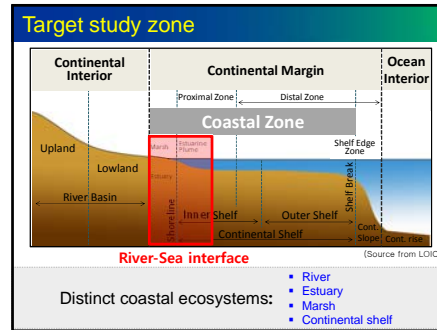


강-해양 생태계 연결성 학술워크숍  
국립생태원, 2017. 5. 25(목) ~ 26(금)


**서로 대조 되는 금강과 섬진강 시스템에서의  
유기지화학적 특성 비교**

**Comparison of organic geochemical  
characteristics in two contrasting river systems:  
Geum vs. Sumjin**

**김정현**


**Study site: Geum River**



**1. Closed river estuary**

- Geum River
- 1990: Dam construction
- 1994: Drainage gate operation

(2016/05/02)



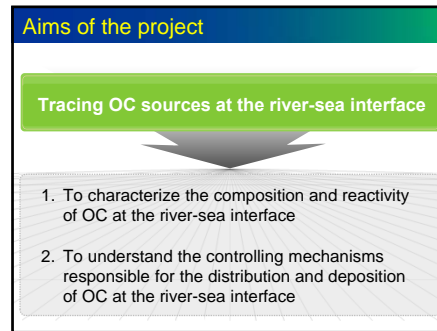
**[Geum River]**  
Length: ca. 395 km  
Catchment area: ca. 9,900 km<sup>2</sup>

NRE 한국연구재단  
2016년도 중견연구자 지원사업: 2016. 06. 01 – 2019. 05. 31 (3년)


**강-해양 인터페이스 지역에서의 유기 탄소 이동 연구:  
금강 및 섬진강 시스템의 사례 연구**

Organic carbon transfer across the river-sea interface:  
a case study in Geum and Sumjin River systems (CARES)

**PI : Jung-Hyun Kim**  
**Co-PI : Jong-Sik Ryu**


**Study site: Sumjin River**



**2. Open river estuary**

- Sumjin River

(2016/05/04)



**[Sumjin River]**  
Length: ca. 222 km  
Catchment area: ca. 4,900 km<sup>2</sup>

**Participants of the project**

**Main participants:**

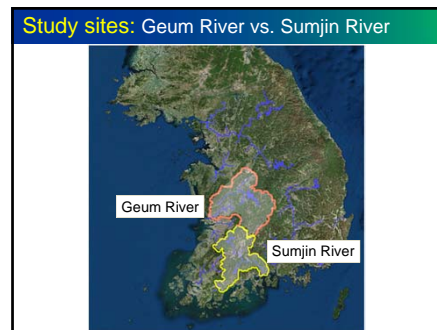
1. Sujin Kang (PhD student) at HYU
2. Hyeongsuek Song (PhD student) at KBSI
3. Dauri Kim (Master student) at HYU
4. Woo-Jin Shin (Post-Doc) at KBSI

**Assisting the field work:**

1. Jong-Ku Gal (PhD student) at HYU
2. Dong-Hun Lee (PhD student) at HYU
3. SoBin Kim (Master student) at HYU
4. Dahae Kim (Master student) at HYU
5. Bohyung Choi (PhD student) at HYU
6. Haejung Kim (PhD student) at HYU
7. Doguné Kim (Master student) at HYU
8. Haebin Choi (Master student) at KBSI

**Others:**

1. Prof. Kyung-Hoon Shin at HYU
2. Dr. Seung-II Nam at KOPRI
3. Young-Ju Son at KOPRI
4. Dr. Hyunsik Bong at KBSI
5. Seunghyun Choi (PhD student) at KBSI



**Sampling strategy**

**Source to sink**

- 1 Water
- 2 Surface sediment
- 3 Sediment core

